



SANBlaze SBExpress-DT4 NVMe SSD Test System

Overview

The SANBlaze SBExpress-DT4 (Desktop, Gen 4) is a complete turnkey PCIe® Gen 4 NVMe SSD validation test system. With industry leading *Certified by SANBlaze* automated testing, the SBExpress-DT4 brings Enterprise Class NVMe validation to the developer's desktop.

The DT4 is 100% Software Compatible with the SBExpress-RM4 sixteen device system. The DT4 provides features — formerly the exclusive domain of the qualification and incoming inspection teams — right to the engineer's desk.

Using the same Single/Dual Port U.2, U.3, M.2, EDSFF and Quarch risers as the 16-bay rack mount system, the desk top DT4 packs the same enterprise class features including ZNS, Opal/Ruby, SRIS, Specification Validation, Power Control, Automated Scripting and Python, XML and REST APIs as its big sister the RM4.

The “out-of-the-box” *Certified by SANBlaze* test suite, or tests highly customized by your qualification team or a customer's inbound inspection team, can be run on the engineer's desk providing a huge time-to-market advantage in finding issues before they leave your workstation.

Quiet enough for remote locations and in an enclosure designed for portability using the optional high impact travel case, the DT4 is perfect for your “work at home” environment or to take directly to your customer.

A complete system, fully self-contained, the DT4 can be set up, configured, and testing NVMe devices in under five minutes.

Highlights

- Enterprise class NVMe qualification in a desktop enclosure
- 100% compatible with SBExpress-RM4 for “Prototype to Production” scaling
- Priced for individual user, low overall cost of ownership
- Plug and Play, testing in under five minutes
- Quiet enough for home, capable enough for the Enterprise
- Available travel case for portability

System Features

Six PCIe Gen4 slots

- Slots 0, 1, 2 Gen4 Riser; options for U.2 / U.3 / M.2/EDSFF (short)
- Slot 3, PCIe x8
- Slot 4, EDSFF (long) support built-in
- Slot 5, M.2 (on Motherboard)

Hardware Features under SW control

- Dual/Single Port selectable
- Fan speed control
- Power up/down testing each device
- PERST (reset) and HotPlug on each device
- Power measuring all slots
- Voltage margining +/- 15%
- SRIS support and built in tests (optional)
- Surprise/Graceful removal testing
- VDM (optional)
- SMBus and In-Band MI testing
- FW download via VDM, SMBus and In-Band
- Gen4 TLP/DLLP/Receive Error monitoring for PCIe Gen4 validation
- LTSSM monitoring for each device

Dimensions

Length: 17" | **Width:** 13.5" | **Height:** 5.5"

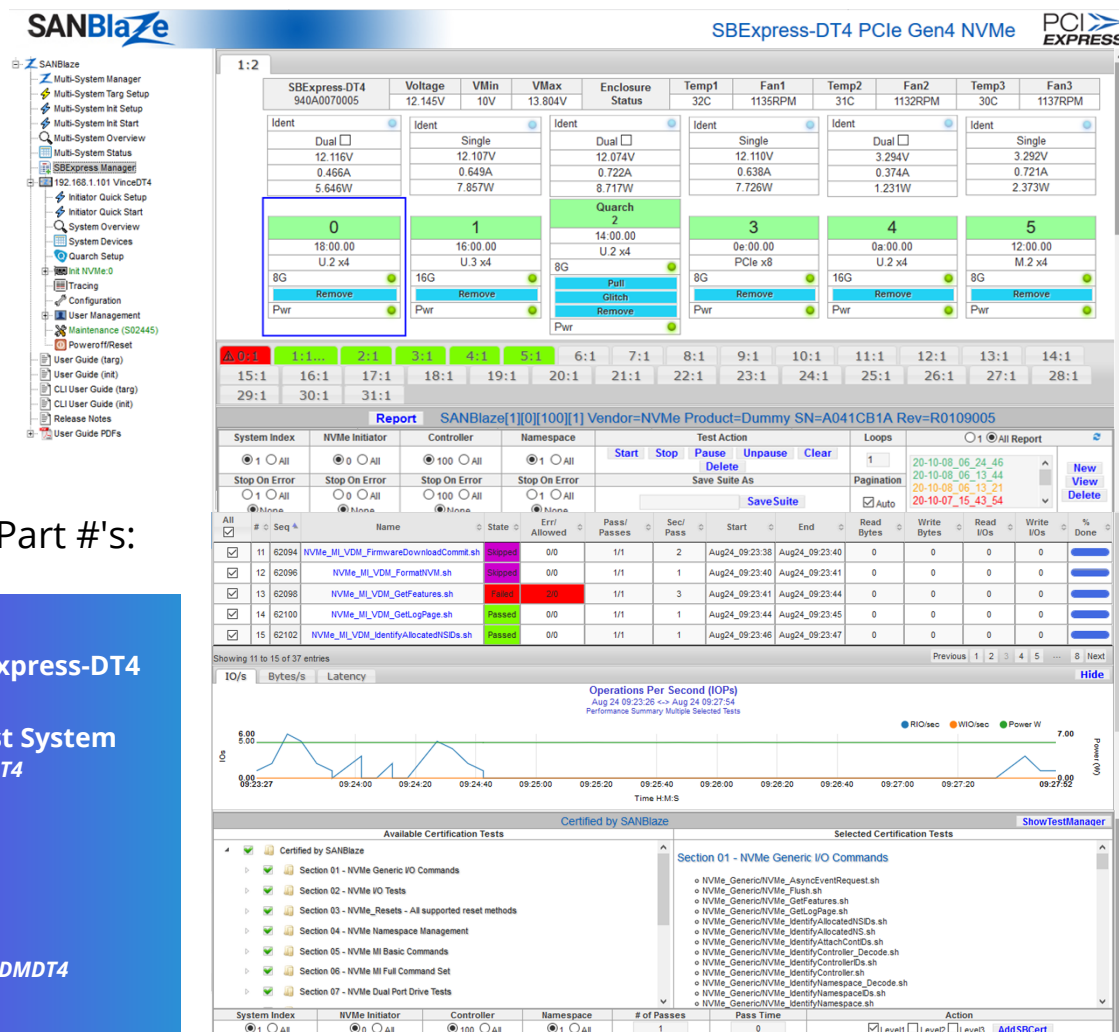
Power

AC Input 100-127 Vac/200-240 Vac
Max 7A at 100V

Certified by SANBlaze

Using the SBExpress Manager software on the SBExpress-DT4 hardware, SANBlaze enables you to test your NVMe drives for compliance and performance. The ability to test your drives from prototype to production provides your end-customers the assurance of 3rd party testing validation - a must-have as NVMe takes its place as the leader in enterprise storage.

Contact us today for a demo of ZNS, TCG Opal, SRIS, VDM, and other major features of the SANBlaze-DT4 NVMe SSD Test System.



Ordering Part #'s:

SANBlaze SBExpress-DT4

NVMe SSD Test System
Part #: SB-NVME-DT4

Travel Case
Part #: 70-200154

VDM Add-On
Part #: SB-NVME-VDM-DT4

SANBlaze SBExpress Manager with Certified by SANBlaze Automated Test Suite

All information in this document is subject to change. Contact SANBlaze for additional information.